

SolarSpace

EFFICIENCY,RELIABILITY,SUSTAINABILITY





About US

The Manufacturing Expert of PV Cell and Module

A Highly Reliable Solar Products Manufacturer

SolarSpace was established in 2011, as a world leading solar cell and module manufacturer, concentrating on high efficient solar-technology production in China and overseas. We are the top 4 leading solar cell manufacturer and provide high quality solar modules with our core cell technology worldwide. SolarSpace is dedicated to empower solar solution and to be a true reliable supplier to our business partners around the world.

25GW+

Capacity of
Solar Cell

4.5GW

Capacity of
Solar Module

TOP4

Solar Cell
Supplier

2011

Time of establishment

6000+

Global Employees

Milestone



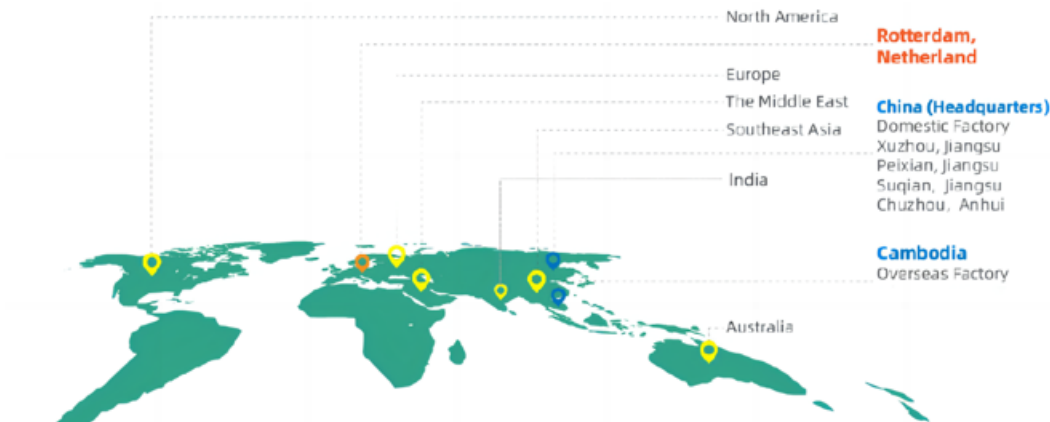
The World Leading PV Cell&Module Manufacturer



6 Manufacturing Bases

7 Intelligent Factories

100+ overseas clients*



Business Involved

Manufacturing Base

Warehouses

* Business in Germany, USA, India, Canada, Mexico, Korea, Italy, France, UK, Thailand, Korea, Vietnam, Jordan, Turkey, Tunisia, Armenia and other countries

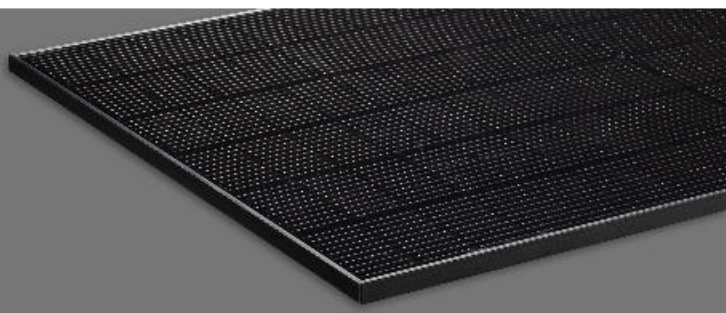
Has been serving the global industry through SolarSpace technology embedded brands over a decade.



1H22 Cell shipment ranking		InfoLink
Rank	Company	
1	Tongwei	
2	Aiko	
3	Hunergy	
4	Solar Space	
5	Jietai	



Based on years of manufacturing experience, SolarSpace insists on providing efficient and reliable module products to its partners with "high standard" and "high quality" as production requirements.



A photograph of a data center aisle, showing rows of server racks on both sides, with a perspective view looking down the aisle. The image is overlaid with a semi-transparent green filter.

Why SolarSpace

Efficiency, reliability, Sustainability

More Than Just a Manufacturer

Silicon

Ingot

Wafer

- Stable Partnership with Leading Supplier
- Strict Quality Standards

Cell

Module

- Leading Product Technology and Highest Quality Level
- Superior Operation Efficiency

Delivery

Service

- Committed to Contract Fulfilment
- Vertical Core Supply Chain Secure 99.9% on-time Module Delivery
- Globally experienced Team offering Professional and Efficient Service

A large green circle with a white border, containing the word "Efficiency" in white text. It is surrounded by several smaller teal circles of varying sizes.

Efficiency

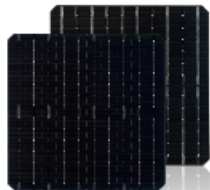
A grey circle with a white border, containing the word "Reliability" in white text.

Reliability

A grey circle with a white border, containing the word "Sustainability" in white text.

Sustainability

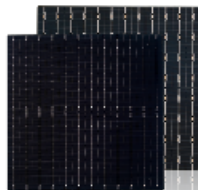
M10 PERC / G12 PERC / M10 Topcon



M10 Mono PERC
Bifacial Cell

Average efficiency
of mass production

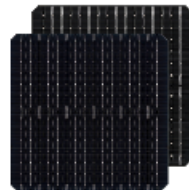
23.3~23.5%



G12 Mono PERC
Bifacial Cell

Average efficiency
of mass production

23.2~23.4%



M10 N-type TOPCon
Bifacial Cell

Average efficiency
of mass production

24.8~25.3%



Application of thinner wafer



Higher cell conversion efficiency



More energy in low light conditions



Outstanding temperature coefficient



Lower Cell Degradation



Excellent mechanical characteristics

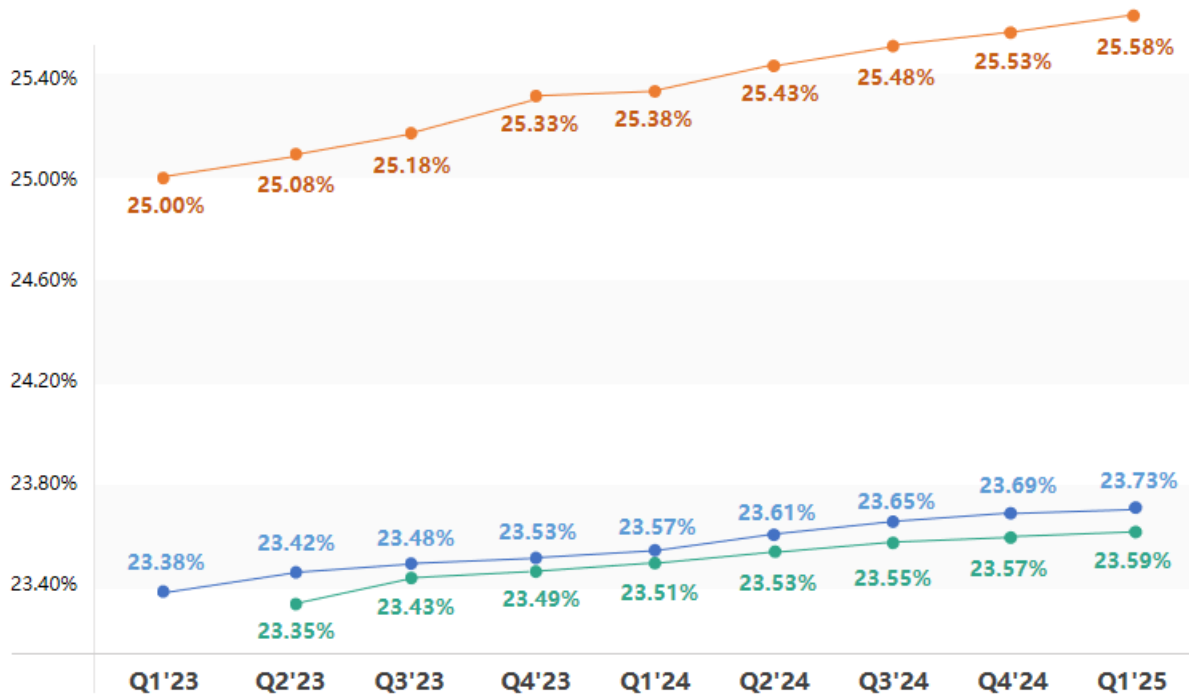
Solar Cell Efficiency Roadmap



182 PERC

182 TOPCon

210 PERC



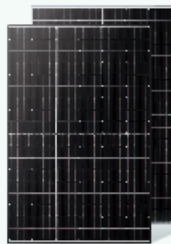
M10-PERC



SS8-72HD/HS-M

Max.Power Output **560W**

Max.Module Efficiency **21.5%**

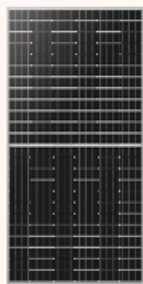


SS8-54HS/HSB-M

Max.Power Output **415W**

Max.Module Efficiency **21.3%**

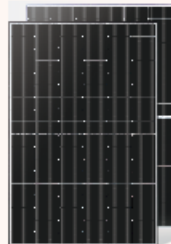
M10-N-TOPCon



SS8-72HS/HD-N

Max.Power Output **575W**

Max.Module Efficiency **22.3%**



SS8-54HS/HSB-N

Max.Power Output **430W**

Max.Module Efficiency **22.0%**

SS8-72HS 540-560M

Mono-Facial Module



High Power Output



High Reliability



More Power Generation



Great Adaptability

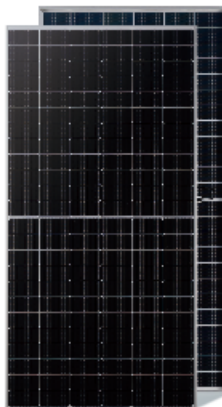
Max.Power Output **560W**

Max.Module Efficiency **21.7%**

Suitable For All Scenarios

SS8-72HD 535-555M

Bifacial Dual Glass Module



High Power Output



High Reliability



More Power Generation



High ROI

Max.Power Output **555W**

Max.Module Efficiency **21.5%**

Best Choice For Utility Project

SS8-54HS 395-415M

Mono-Facial Module



High Power Output



High Reliability



More Power Generation



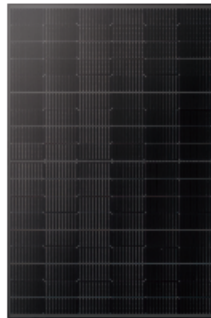
Better Flexibility

Max.Power Output **415W**

Max.Module Efficiency **21.3%**

SS8-54HSB 390-410M

All Black Module



High Power Output



High Reliability



More Power Generation



Aesthetic Design

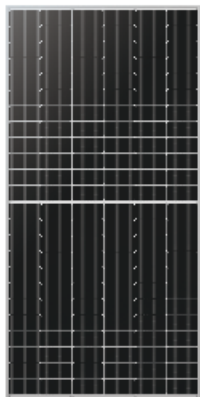
Max.Power Output **410W**





Max.Module Efficiency **21.0%**

Best Choice for Rooftop Project

SS8-72HS 555-575N

N-TOPCon Mono-Facial Module



-  Super Power Output
-  High Reliability
-  Extra power generation
-  Great Adaptability

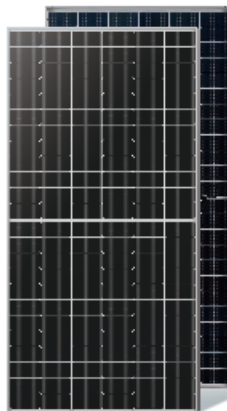
Max.Power Output **575W**





Max.Module Efficiency **22.3%**

Suitable For All Scenarios

SS8-72HD 550-570N

N-TOPCon Bifacial Dual Glass Module



-  Super Power Output
-  High Reliability
-  Extra power generation
-  High ROI

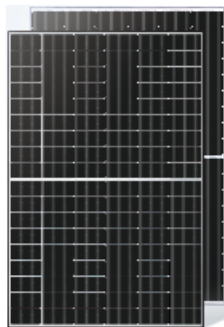
Max.Power Output **570W**

Max.Module Efficiency **22.1%**

Best Choice For Utility Project

SS8-54HS 410-430N

N-TOPCon Mono-Facial Module



Super Power Output



High Reliability



Extra power generation



Better Flexibility

Max.Power Output **430W**

Max.Module Efficiency **22.0%**

SS8-54HSB 410-430N

N-TOPCon All Black Module



High Power Output



High Reliability



More Power Generation



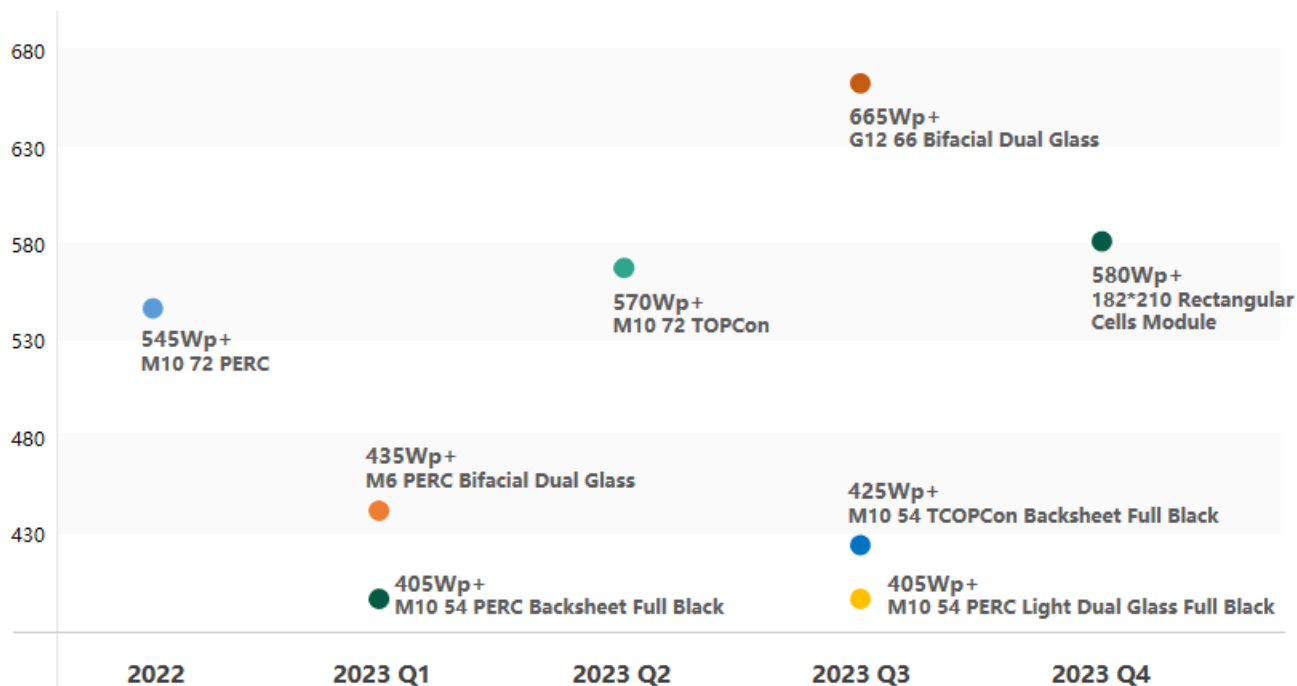
Aesthetic Design

Max.Power Output **430W**

Max.Module Efficiency **22.0%**

Best Choice for Rooftop Project

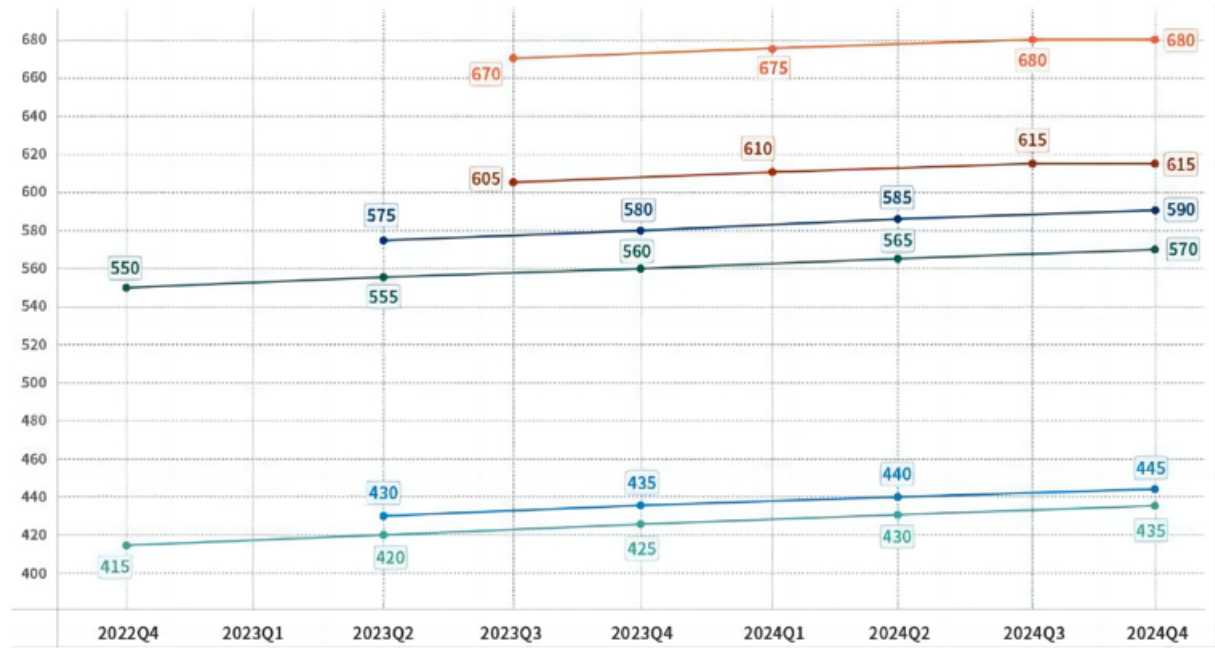
Product Roadmap



Solar Module Power Roadmap



- M10 PERC 54cells
- M10 PERC 72cells
- M10 TOPCon 54cells
- M10 TOPCon 72cells
- G12 PERC 60cells
- G12 PERC 66cells



A large green circle with a white border, containing the word "Reliability" in white text. It is surrounded by several smaller teal circles of varying sizes.

Reliability

A gray circle with a white border, containing the word "Sustainability" in white text.

Sustainability

A gray circle with a white border, containing the word "Efficiency" in white text.

Efficiency

Fully automatic production line to ensure the consistency of top quality.



99%

Production Yield



16%

Reduction of labor cost



312

Quality Inspections

SolarSpace believes "Quality Matters The Most". We establish a strict quality management system starting from materials control, production management to delivery inspection, to ensure top product quality and reliability.

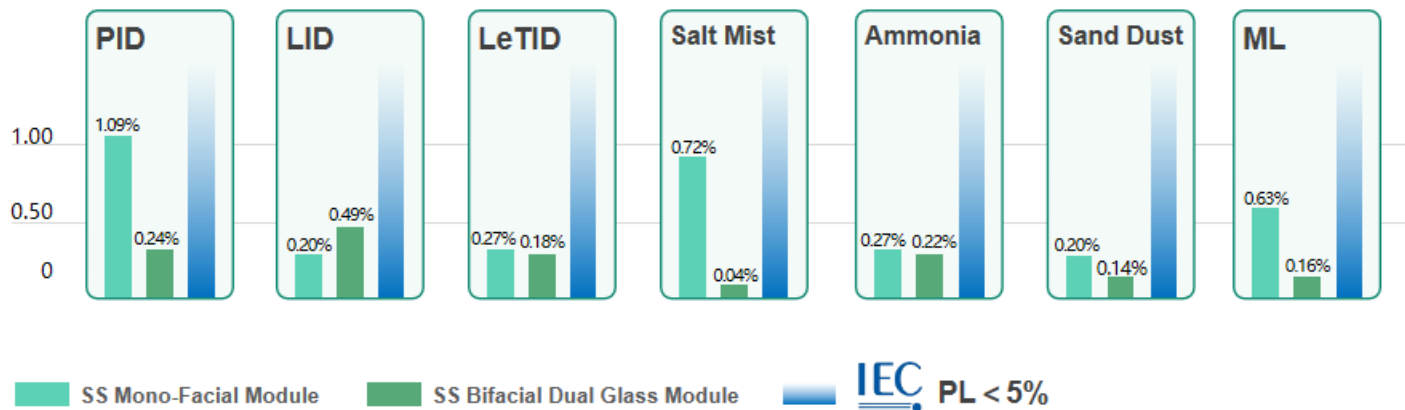
- ▶ Strict Supplier Management
- ▶ Standardized BOM selection
- ▶ Lean Manufacturing Process
- ▶ Comprehensive Quality System



Complete System Certificates

- ▶ IEC61701, IEC62716, IEC60068
- ▶ ISO9001: 2015: Quality Management System
- ▶ ISO14001: 2015: Environment Management System
- ▶ ISO45001: 2018: Occupational health and safety management systems

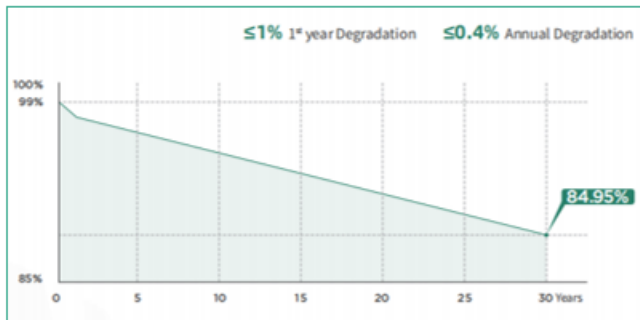
Lower Degradation



Superior Product Warranty

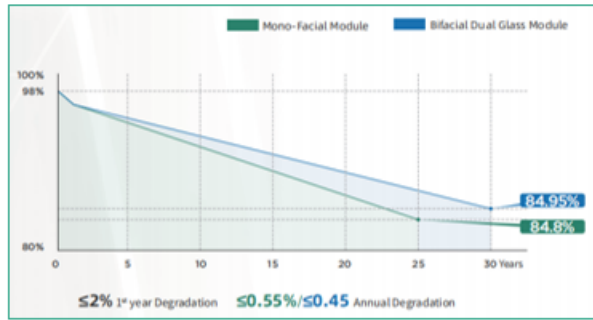


TOPCON



12 Years Product Warranty 30 Years Linear Power Warranty

PERC

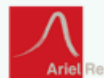


12 Years Product Warranty 25/30 Years Linear Power Warranty

Comprehensive Certificates



Performance Insurance



Comprehensive Service System



100%

Contract
Fulfillment

99.9%

On-time
Delivery

1 to 1

Customer
Service

12h

Service
Response

< PPM 500

Customer
Complaint Rate

A central diagram with a large green circle containing the word "Sustainability". To its right are two grey circles containing the words "Efficiency" and "Reliability". The background is white with several smaller teal and grey circles scattered around.

Sustainability

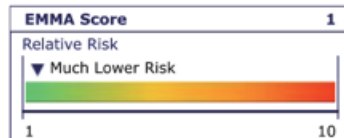
Efficiency

Reliability

Healthy and Strong Financial Momentum



- ▶ Over several years, SolarSpace has consistently maintained an industry leading ability to mitigate risk and adapt to market changes.
- ▶ The company prioritizes corporate financial health and stability



D&B Rating	4AA1 (Previous 4AA2)
Financial Strength	(Registered Capital 85,000,000 - 449,000,000)
Composite Appraisal	1 Strong

Profitable business model, healthy balance sheet

IPO planned in 2023 will further strengthen the financial position

Rapid increase in business scale

Powerful shareholders

Excellent Credit Ratings

We require each supplier to provide supplier statement, business license, purchase/sale documents, shipping records, production record, payment record for all our shipments.

Silicon Material

Traceable raw material suppliers



Silicon & Wafer

Cooperate with top suppliers

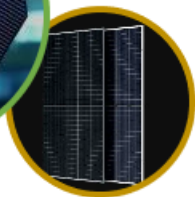
PV Cell

Self produced high-quality PV Cell



PV Module

Self Produced high-efficiency PV Module



- Green Manufacturing
- Charitable Donation
- Energy Conservation
- Emission Reduction



40GW+
PY Products shipments

50+
commonweal proiccts

100%
of the factory buildings are covered by PV modules

23million
tons carbon emmison reducficn

EFFICIENCY
RELIABILITY
SUSTAINABILITY

An aerial photograph of a large industrial facility, possibly a manufacturing plant or warehouse, with a large roof area covered in solar panels. The image is overlaid with a semi-transparent green filter.

Case Study



Wulian County, Rizhao City, Shandong Province **200 MW**

Xilinhot, Inner Mongolia

47.5 MW





Thanks For Your Attention

高 效 / 可 靠 / 可 持 续 发 展
EFFICIENCY / REALIABILITY / SUSTAINABILITY

Contact us | sales@solarspacepower.com www.solarspace.cn